

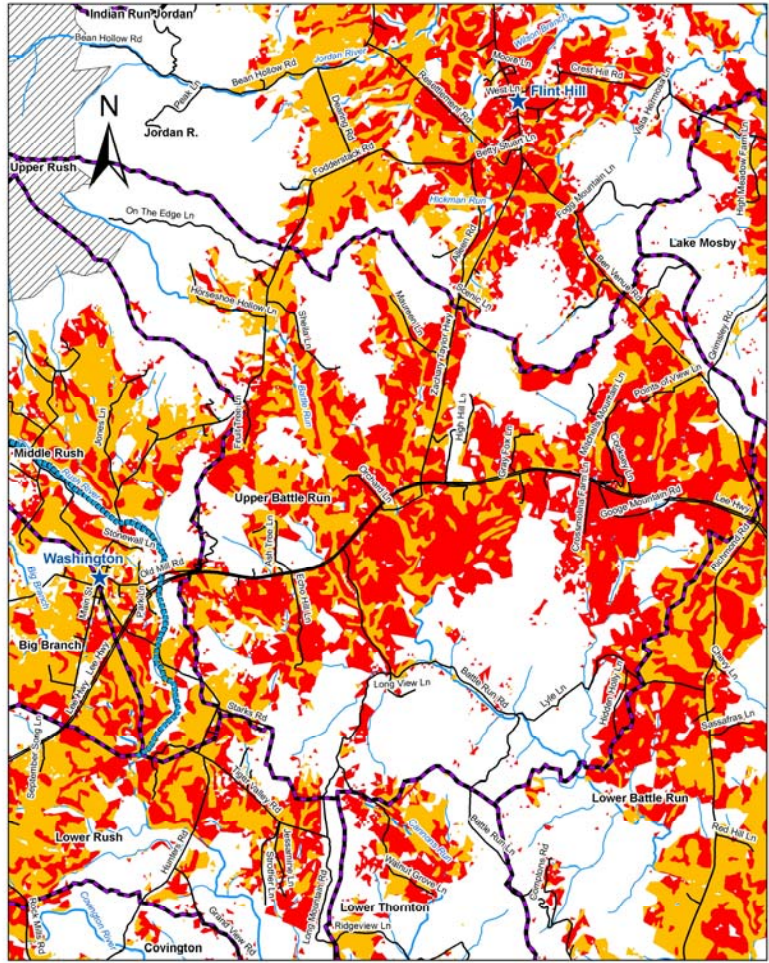
“To help preserve, protect, conserve and restore water resources and watersheds in Rappahannock County”



1. Public Participation

- Communication
 - GIS!
 - Workshops
 - Special Events
 - “Getting the word out”

Upper Battle Run Soil Erodibility on NON-Forested Land



Prepared by: Forrest Marquisee
 Prepared for: RappFLOW
 Sources: RappFLOW 2008,
 National Hydrography Database 2007,
 DEQ 2007, NLCD 2001,
 US Dept. of Agriculture, NRCS 2007,
 Soil Survey Geographic Database
 Stream Buffers: RappFLOW 2006
 July 7, 2008

| Legend | |
|--------------------------|---------------------|
| ★ Villages | ▨ National Park |
| ▬ Impaired Streams | ▬ Erosion Hazard |
| ▬ Roads | ▬ Slight / Moderate |
| ▬ Subwatersheds Boundary | ▬ High / Very High |
| ▬ Streams | |



2. Overview of Programs

- Education and Outreach
 - Special Events
 - Extensive library of materials
 - Residential assistance
 - Buffers
 - Ponds
 - LID: Rain Gardens, buffers, rain barrels, etc.
- Science
- Technical assistance to the County Government
- Demonstration projects: buffers and rain gardens

3. Programs in the County

- WQAC
 - Drought tracking
 - WSP
 - Other assistance
- Ordinance Assistance
 - Biosolids
 - SWM
 - Land Use Plan
 - E&SC

4. Potential Funding Sources

- RappFLOW has received Grants from Federal, State, Foundations and private sources
- RappFLOW is a 501(c)(3) corporation

5. Proposed Roles

- Support to the County Government on water quality and quantity issues
- Public participation, education and outreach
- Broader Regional capabilities
 - GIS
 - Data Analysis
 - It would “stretch” our current capacity

6. Regulatory Controls

- RappFLOW can help in:
 - Assistance in developing regulations
 - Estimating the impacts of controls
 - Prioritization

7. Monitoring During Implementation

- RappFLOW and associates have monitoring capabilities:
 - Macroinvertebrate Program Managed by CSWCD
 - DEQ Grant
 - In-House Capabilities:
 - Coliscan
 - DO, pH, Temperature monitoring
 - With funding, sampling for other constituents
 - Stream Flows
 - Analyses: Integration with DEQ, NPS, Others

Challenges

- Manpower and Funding
- Residential BMPs (as with Agricultural BMPs) are intensive efforts to implement
- Droughts have had a major impact
- Rappahannock County agricultural is primarily cattle-raising
 - **Severe** economic pressures
- **On the bright side:** Our County has many dedicated individuals and groups that can and do help in preserving our land and water resources. **Also**, our County Government is very responsive to environmental concerns